

Kaseya® Network Monitor

Stand-alone and light weight, this feature packed agent-less monitoring is easy to use, accessible from a browser, scales from one to thousands of monitored devices, and is affordable for any budget. Monitors Windows, Linux, Cisco IOS and 20 other operating systems.

Kaseya Network Monitor comes in two editions. The **Standard Edition** supports a single network while the **Distributed Edition** can combine multiple networks together into a single view.

Kaseya Network Monitor includes the basics for monitoring all aspects of network connected devices beginning with the **performance monitoring**: Network bandwidth, CPU, disk, and memory utilization. On Windows platforms, both Windows performance registry counters and WMI queries are available.

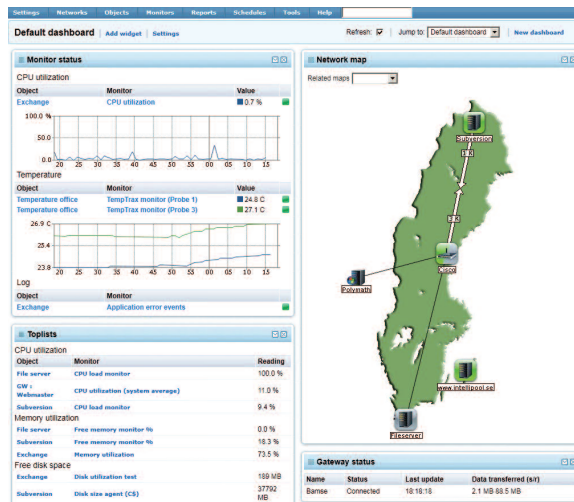
The **file and directory monitoring** can monitor if a file exists, how many files there are in a directory, if the total content of a directory is growing or check if new files are added on a schedule.

Log monitoring can trigger notifications and other actions when a log message is encountered that matches a pre-defined filter. Windows event log, Linux/Unix syslog and text log files are supported.

Database monitoring includes support for monitoring Oracle, MySQL, Microsoft SQL Server and a generic ODBC monitor for use with other DBMS. All of the monitors can perform a SQL query as well as additional performance monitoring specific to each DBMS.

The **SNMP trap monitor** has advanced filtering capabilities and alarm conditions can be setup to respond to specific properties of the received trap. There is also the SNMP query monitor that can poll specified OIDs, perform a simple calculation, and compare the result with a specified value.

Mail Quality of Service monitor makes it possible to can test the ability of a mail server to send and receive mail. Statistics about round trip time, time to send and login time is stored.



Network Utilization and Network Map Dashboard

Name	Address	System type	Operator group	Network
192.168.42.128	192.168.42.128	Generic/Unknown	Admin	Intellipool Network
192.168.42.128	192.168.42.128	Generic/Unknown	Admin	Intellipool Network
Bamse WMI	bamse	Windows 2008, 64 bit	Admin	Intellipool Network
Cisco new server	192.168.42.1	Generic/Unknown	Admin	Intellipool Network
em1 demo	em1.sensatronics.com	Generic/Unknown	Admin	Intellipool Network
File server	Subversion	Generic Windows	Admin	Intellipool Network
Hyper-v	192.168.42.8	Windows 2008, 64 bit	Admin	Intellipool Network
intellipoolbranch.local	intellipoolbranch.local	Windows 2003, 32 bit	Admin	Intellipool Network
Poseidon	192.168.42.28	Generic/Unknown	Admin	Intellipool Network
templatetest	dachi	Windows XP	Admin	Intellipool Network
Turbo Surf	www.turbosurf.se	Generic/Unknown	Turbosurf	External tests
Webmaster	intern.intellipool.com	Redhat Enterprise Server 5.1	Admin	Intellipool Network
192.168.42.8	bamse	Windows 2008, 64 bit	Admin	Intellipool Network
71.81.200.59	71.81.200.59	Generic/Unknown	Admin	Intellipool Network
ADSL Modem/Gateway!	213.115.158.57	Generic/Unknown	Admin	Intellipool Network
AKCP digital thermometer	217.37.84.131	Generic/Unknown	Admin	Intellipool Network
Aktiva Fonder	www.aktivafonder.se	Generic/Unknown	Aktiva fonder	Intellipool Network
Avanza test	www.avanza.se	Generic/Unknown	Admin	External tests
Bamse (Transferspeed)	Bamse	Windows 2008, 64 bit	Admin	External tests

Key Benefits:

- Two editions supporting both single networks and distributed environments.
- Agentless monitoring of any operating system or network connected device.
- Advanced action lists for notification and recovery with escalation.
- 37 different types of monitor types ranging from ping to advanced quality of service monitors
- Lua scripting: New monitor functions can be developed using the integrated Lua scripting language
- Monitors Windows eventlogs, syslogs and other logfiles
- Mail flow monitoring, send and receive mails and trigger alarms based on round trip times
- Database monitoring of Oracle, MS SQL Server, MySQL & any other database connected by ODBC
- Windows performance counters
- WMI queries
- File and directory monitoring
- Web server monitoring
- Active Directory monitoring
- Toplists: real-time insights into monitoring results.
- Network discovery that pre-configure detected monitors such as CPU, memory, bandwidth, disc and swap.
- Template system to quickly setup monitoring for different vendors
- Comprehensive SNMP support with built MIB browser and MIB compiler
- User-configurable dashboards.



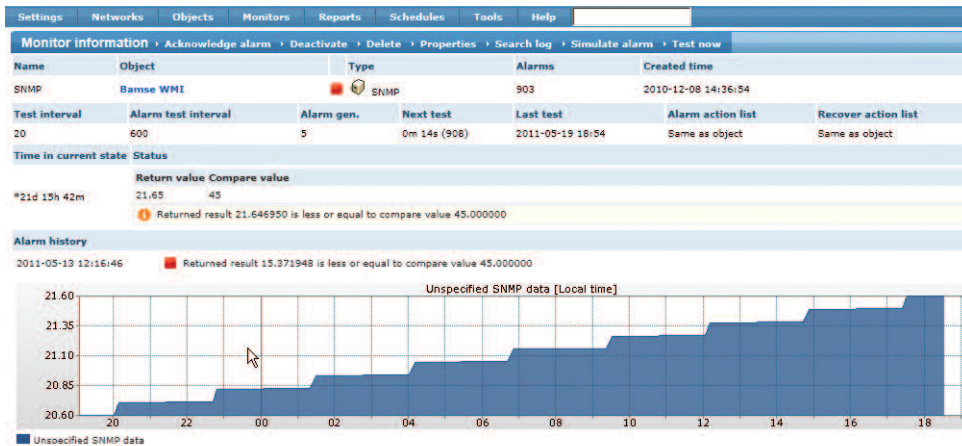
"There's a script for that!"

Lua is a lightweight and easy to learn script language that is embedded into KNM. Using Lua and the KNM application programming interface customers can create their own monitoring and recovery functions. To make development efficient Kaseya provides a free Integrated Development Environment (IDE). Scripts can easily be exchanged between users on the Kaseya forums.

Actions

In addition to support for E-mail & SMS notifications, the product can also restart windows services, execute command via SSH, perform HTTP queries, send SNMP set messages and more. Additionally, Lua scripts can be executed in response to alarms and recovery.

Many of the actions available for alerting and recovery can also be scheduled to be executed on a single occasion or as repeating events.



Toplist

The toplist function delivers key metrics on all monitored resources in your network. The toplist can answer questions such as:

- What machines are using most CPU on average this month and how does it compare to last month?
- What machines have least disc left and how fast do the amount of free disc decline?
- What machines in the network transfer most data over the network during a day, week or month?

The numbers are crunched and updated in real-time as the monitors tests and can provide invaluable insights into your network.

Reporting

- Report elements includes charts, datatables, toplist and more.
- Reports can be scheduled to be generated and delivered by e-mail to specific operators or automatically published in local or remote folders via file transfer.
- Delivered with a set of pre-configured reports.

Dashboards

- Network maps with status and bandwidth usage visualization.
- Includes a wide selection of useful widgets ranging from realtime information to notepads.
- Dashboards can be viewed without the need to log into the system.

About Kaseya

Kaseya is the leading global provider of IT Systems Management software. Kaseya solutions empower virtually everyone — from individual consumers to large corporations and IT service providers — to proactively monitor, manage and control IT assets remotely, easily and efficiently from one integrated Web-based platform.

Contact Kaseya: www.kaseya.com | sales@kaseya.com

©2011 Kaseya. All rights reserved. Kaseya and the Kaseya logo are among the trademarks or registered trademarks owned by or licensed to Kaseya International Limited. All other marks are the property of their respective owners.

Why Kaseya?

- Supports the widest range of deployment topologies
- Unified Management Platform with a wide breadth of functionality
- 100% Web Based
- Robust Reporting Options
- Global Presence

Minimum Requirements

Up to 100 objects:

- 1 GHz CPU
- 512 MB memory
- 1 GB free disk space
- Windows 2003, Windows 2003 R2, Windows 2008 or Windows 2008 R2

Up to 500 objects:

- 2 GHz CPU
- 1 GB MB memory
- 4 GB free disk space
- Windows 2003, Windows 2003 R2, Windows 2008 or Windows 2008 R2

Up to 2,500 objects:

- Intel Xeon > 2 GHz Quad core CPU
- 4 GB MB memory
- 15 GB free disk space
- Windows 2003, Windows 2003 R2, Windows 2008 or Windows 2008 R2



www.kaseya.com