



The Kaseya® Solution

An enterprise-class IT systems management in a single pane of glass for any size business that is easy to buy, easy to deploy and easy to use!

As an IT Professional, you carry the responsibility of maintaining the lifeline of the systems you manage to ensure business goals are being met while maximizing end user productivity. Despite budget restraints, possible reduction in personnel and often limited resources you have a commitment to:

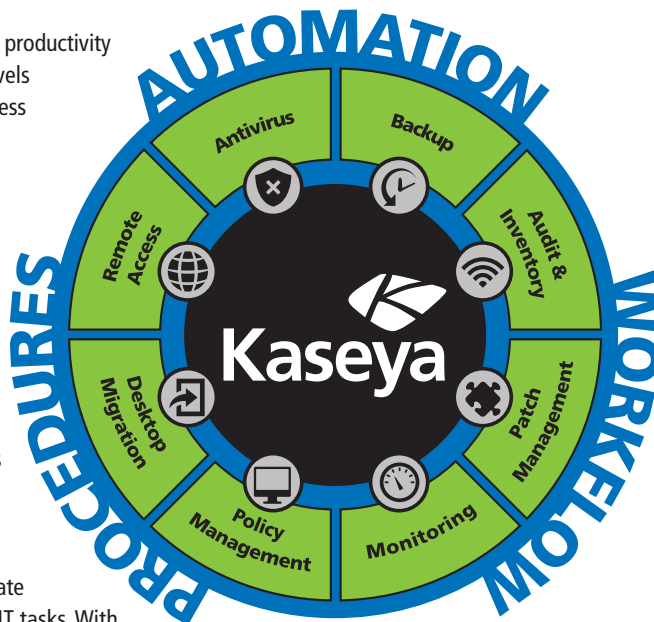
- Reduce operational costs
- Improve efficiency and increase productivity
- Provide consistent IT service levels
- Implement an automated, process driven model
- Exceed internal and external customer expectations
- Focus on strategic initiatives
- Manage IT as your company continues to grow

You can accomplish this with a complete, secure, reliable and full service IT Systems Management Solution that will meet your needs today and provide the scalability you need for the future.

The **Kaseya Solution** is the ultimate solution for automating recurring IT tasks. With Kaseya, IT professionals can offer extended service capabilities with better service delivery. And, with flexible payment terms, optional configurations, maximum scalability and multiple domain capabilities, IT organizations of all sizes can experience the rewards of IT automation.

Features

- **Antimalware** utilizes technologies that are designed to quickly detect, destroy, and prevent malware while leveraging the automation capabilities of the Kaseya framework.
- **Antivirus** for Windows Workstations provides complete protection on networks and beyond from potentially dangerous programs and network attacks.
- **Application-Level Backup** lets you recover from any server failure to physical or virtual machines in minutes.
- **Audit and Inventory** performs fast, accurate and up-to-date Audit and Inventory of computers, servers, and mobile devices. Deployable over the LAN, WAN, and Internet.
- **Backup** implements real-time automated disk remote backup, disk imaging, file level remote backup and bare metal restore for Windows servers and workstations.
- **Desktop Policy Management** manages the end user experience from interface options to hardware config and everything in between.
- **Desktop Migration** automates the backup and collection of user settings. Redirect them to another machine and have them working with the same settings as before.
- **Info Center** robust management reporting has all the information you need to effectively manage and convey the status of the network infrastructure and communicate the value of your services.
- **IT Service Delivery Kit** has hundreds of additional scripts for automating procedures such as agent control, configuration changes, clean-up and maintenance, disk management, network testing and more.



Key Benefits:

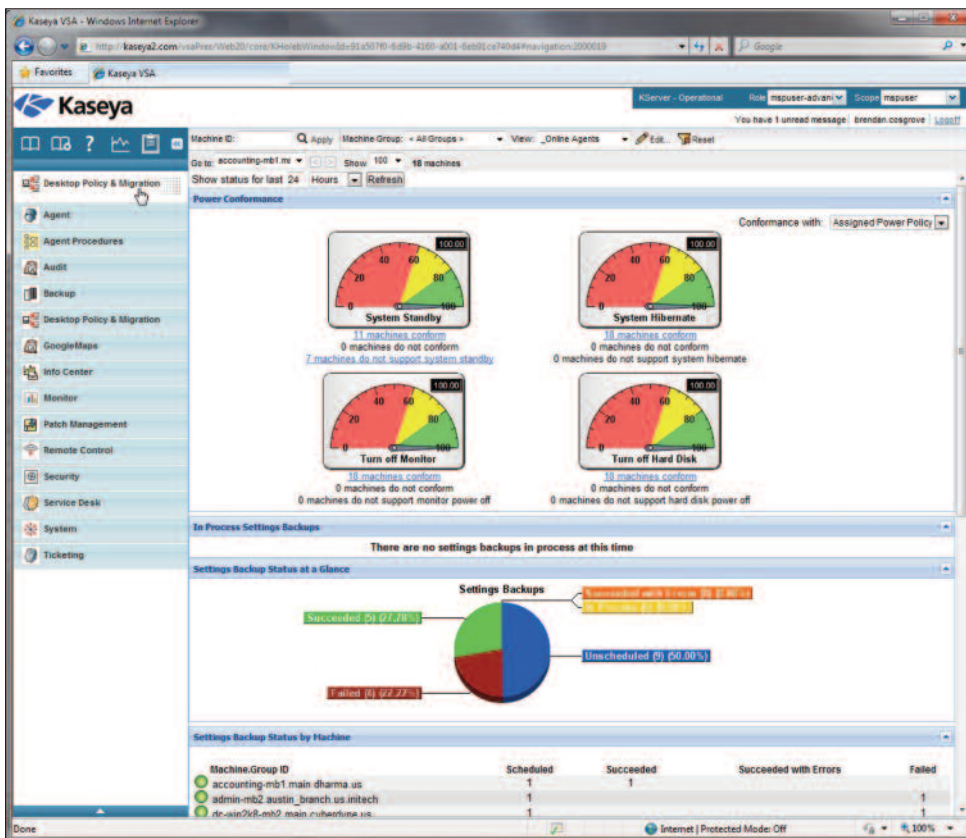
- Lightweight and efficient agent technology for Windows, Linux and Mac operating systems
- Complete audit and inventory of installed software and hardware configurations
- User-defined system and device monitoring with immediate notification
- Security & business continuity solutions to match business requirements
- Instant remote control from anywhere to anyplace at anytime
- End user self-service portal and ticket submission
- Comprehensive dashboards and customizable reporting
- Automated patch deployment and approval process
- Rules-based software deployment
- Flexible administration & customization

Why Kaseya?

- Easy deployment means rapid ROI
- Flexible deployment options
- Discover and manage all IT assets from a single pane of glass
- Automate routine IT tasks to reduce support costs and dramatically improve service levels
- Proven business accelerator with millions of managed machines worldwide



- **Mobile Help Desk** service desk management application for technicians and service desk managers who need access in the hallway or at home while ensuring escalation policies and incident remediation are properly followed.
- **Monitoring** implements proactive, user-defined system monitoring with instant notification of problems or changes such as low disk space, processor spikes and memory issues.
- **Network Discovery & Network Monitoring** finds all IP based devices connected and interconnected to a network or networks, catalogs them within the system and allows you to manage them.
- **Online Backup** allows organizations to conduct remote folder- and file-level backups of distributed desktops, laptops and servers that can be accessed and restored to any machine at any point in time.
- **Patch Management** automatically keeps servers, workstations and remote computers up-to-date with the latest important security patches and updates.
- **Remote Access** with Live Connect provides a single machine interface to give you full control with minimal end user interruption—even works behind firewalls and NAT.
- **Service Desk** provides a comprehensive and flexible web-based helpdesk environment. Think of it as your hub of knowledge where your pre-defined IT processes flow through a central repository creating a fully automated service desk strategy.



Effectively manage and convey the status of the network infrastructure and communicate the value of your IT service delivery.

About Kaseya

Kaseya is the leading global provider of IT Systems Management software. Kaseya solutions empower virtually everyone — from individual consumers to large corporations and IT service providers — to proactively monitor, manage and control IT assets remotely, easily and efficiently from one integrated Web-based platform.

For a free 30 day trial visit www.kaseya.com/download

Contact Kaseya: www.kaseya.com | sales@kaseya.com

©2011 Kaseya. All rights reserved. Kaseya and the Kaseya logo are among the trademarks or registered trademarks owned by or licensed to Kaseya International Limited. All other marks are the property of their respective owners.

Our products are highly configurable to meet each customer's specific need.

All of the Kaseya features below are available in any combination and configuration. Below are some Pre-configured Bundles:

The Essentials Bundle

- Agent Procedures
- Info Center
- Live Connect
- Remote Control
- Audit and Inventory
- Patch Management
- Monitoring
- Ticketing
- Time Tracking

The Advanced Bundle

Includes the Essentials Bundle PLUS...

- Service Desk
- Desktop Policy Management
- Desktop Migration
- Network Discovery
- Network Monitoring

These **Add-On Modules** also available:

- Antivirus
- Backup
- Endpoint Security
- Online Backup
- Antimalware
- Application-Level Backup

Agent System Requirements

- 333 MHz Pentium-class CPU or greater
- 128 MB of RAM
- 30 MB of free disk space
- Network Interface Card (NIC) or modem
- Microsoft Windows NT, 2000, XP, 2003, 2003 R2, Vista, 2008, 2008 R2, 7
- Macintosh OSX v10.3.9 and above, Intel and PowerPC editions
- SuSE Linux Enterprise 10 and 11, RedHat Enterprise Linux 5.4/5.5, Ubuntu 8.04-10.4, and OpenSuSE 11
- TCP/IP Outbound Port 5721
- No Inbound Ports



www.kaseya.com